



Solution Specialist

ADVANCED PROGRESSIVE EXPERIENCED



CAPABILITY BROCHURE



ABOUT

ST8 WIDE ELECECTRICAL

Founded in 2010, ST8 Wide Electrical is an electrical contracting company based in Toowoomba that specialises in the installation and servicing of instrumentation, PLCs, motors, VSDs, sensors, and other electrical equipment in industrial and agricultural environments. Our company has a strong focus on telemetry and the Internet of Things (IoT), which allows us to provide cutting-edge solutions for our clients.

ST8 Wide Electrical has a team of highly trained and experienced electricians who are dedicated to providing the highest quality service to our clients. We have extensive knowledge in a wide range of electrical systems and equipment, which enables us to provide customised solutions that meet the unique needs of each client.



INDUSTRIAL



AGRICULTURAL



**PROCESS
AUTOMATION**



GRAIN HANDLING



**TELEMETRY &
IoT**



FEED LOTS



**SOLAR POWER
SYSTEMS**



**HAZARDOUS
AREA**



PUMP STATIONS



**CONTROL
BOARDS**



INSTRUMENTATION



**VEGETABLE
PROCESS LINE**

Solution Specialist

ADVANCED PROGRESSIVE EXPERIENCED

CORE COMPETENCIES

ST8 Wide Electrical specialises in system design, product supply, installation, and maintenance of innovative and efficient industrial & agricultural process systems.

- ✓ Industrial
- ✓ System Design
- ✓ Project Management
- ✓ Automated Systems
- ✓ Agricultural



PREFERRED SUPPLIERS

ST8 Wide Electrical maintains relationships with an elite selection of preferred suppliers. We choose our products carefully to ensure they are the highest quality available on the market.

Our great buying power means we can offer a larger variety at a better price. We stock the best products from the best suppliers including:





ABOUT ST8 WIDE ELECTRICAL

ST8 Wide Electrical was formed in 2010 by Kane Adamson after working on a wide range of agricultural and industrial projects across the Darling Downs and Queensland. ST8 Wide Electrical has developed a strong reputation for quality workmanship and exceptional customer service. We are committed to building long-term relationships with our clients by providing reliable, cost-effective solutions that meet their needs.

Safety is a top priority for ST8 Wide Electrical. Our company has a comprehensive safety program in place that includes regular training for employees and strict adherence to all safety regulations. This commitment to safety ensures that all projects are completed without an incident and that all employees return home safely at the end of each day.

The company's services include installation, maintenance, and repair of electrical equipment, as well as design and engineering services for new projects. We also offer 24/7 emergency services to ensure that our client's operations are always up and running.

Our clients include small crop farmers, feedlots, food processing plants, seed processing plants, feed mills, grain storage facilities, and industrial environmental specialists. No job is too big or too small for our highly qualified and experienced field team.

At ST8 Wide Electrical we value our customers and deliver professional services and advice backed by exceptional up to date product knowledge. Our staff are industry trained to deliver your project safely and within budget.



KANE ADAMSON

Managing Director and Owner

Kane has more than 25 years of experience in the electrical industry. He has a strong passion for the agricultural industry. He uses his knowledge and experience to successfully run the business at ST8 Wide Electrical.

Kane also has developed the FMS system, a system to remotely control & monitor farming operations from a smart device.

Along with this, he is also a director of Think Water Toowoomba, the two businesses work hand in hand delivering tailored projects to our clients.

info@st8wideelectrical.com.au
0428971253



BEN CHARLESWORTH

General Manager

Ben has over 20 years of experience in the electrical industry, combined with his vast experience from growing up on a working farm, his electrical knowledge in the industrial & agricultural industries is exceptional.

ben@st8wideelectrical.com.au
0438 463 658

PROCESSING PLANTS

ST8 Wide Electrical successfully installed a vegetable packing facility that is fully automated using state-of-the-art cutting, multi-spectrum sorting, washing, drying, and packing equipment. With over 100 motors controlled by VSD, sensors, automated valves, and safety inputs. There was a lot of careful planning and quality workmanship to get this job completed and commissioned on time and in budget.

We are competent in wiring and maintaining cold rooms, water chillers, Vac Coolers, Hydro coolers, and Ice Machines.



ENVIRONMENTAL MACHINES

ST8 Wide Electrical pride our selves on working on process systems that are of benefit to the environment.

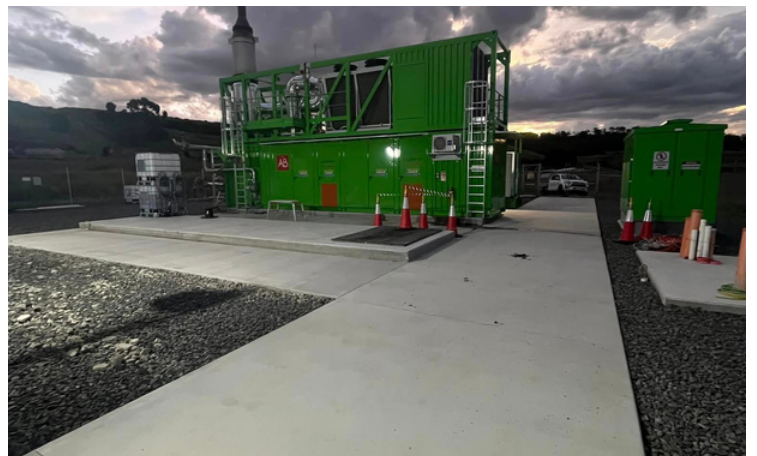
Pyrocal is providing the core gasification technology for the Logan City Biosolids Gasification project where biosolids are transformed into energy and biochar.

The recent trial showed that pollutants in sewage like persistent organic pollutants (POPs) and micro and nano plastics are destroyed throughout gasification. Biosolids are treated and partially dewatered sewage sludge.

The BeneVap™ “evapoconcentrators” handle water that other technologies can’t touch.

They can eliminate water that is too saline for reverse osmosis or too dirty for mechanical vapor recompression. They are used to reduce the volume or eliminate produced water from oil and gas production, landfill leachate and industrial wastes.

ST8 Wide Electrical are the maintenance electrician for LGI's Toowoomba gasification plant. The gasification plants use landfill biogas to run a gas-powered generator supplying clean energy back into the grid.



AGRICULTURAL INDUSTRIES

From water to plant, plant to farm, farm to factory, factory to shop. ST8 Wide can handle all electrical processes required to get your product there quicker and with less cost.

Automated Fertigation pumping sheds
Processing plants/ Wash Plants
Automated seedling process factories

Vac Coolers
Coolrooms
Water Chillers



FARM IRRIGATION AUTOMATION

ST8 Wide has commissioned multiple irrigation sites across multiple farms, using FMS's remote irrigation system to control and monitor multiple sensors and pumps. All are connected to the cloud even in remote locations with no phone reception.



GRAIN HANDLING

ST8 Wide Electrical has successfully upgraded a 20K head feed mill from basic control to a fully automated PLC system. The upgrade was initiated after half the mill was damaged during a storm. The mill was brought back online over the weekend, with the upgrade happening over the next 3 months with zero interruption of the output of the mill.

ST8 Wide Electrical also successfully maintains Ridley agriproducts Toowoomba & Clifton plants. With 24/7 breakdown and after-hours upgrades.



AUTOMATED MACHINES

ST8 Wide Electrical is always up for a challenge and enjoys working on the weird and wonderful.

We were commissioned by Jurra Industries to design, install and commission a prototype composite matting washer for JWA. The washer is automated and saves a lot of man-hours. These mats are used in many different industries including- oil and gas, civil, defense, mining, and aviation.

ST8 Wide Electrical was contracted by Kotzur to install, wire, and commission the electrical on 10 x 450TPH drive-over grids (DOG's). This project was conducted on a tight schedule to meet harvest season.



SPECIALIST KNOWLEDGE

We have a large group of experienced staff who specialise in design, construction, and maintenance. Throughout the years, we have developed a considerable 'bank' of experience and information in management and technical problem-solving in electrical systems related to grain handling, vegetable processing, pumping, and agricultural irrigation. This makes us unique in our ability to bring a complete package to electrical projects.

ST8 Wide Electrical is committed to ensuring that our staff are trained in the latest technology and products being introduced by electrical manufacturers Australia-wide. Below are some of the tickets our technicians hold.

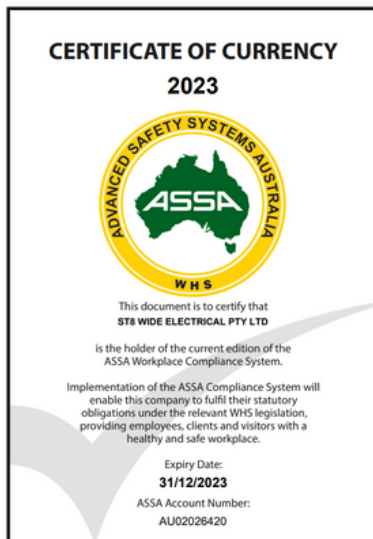
- Cert 3 in instrumentation
- Hazardous area
- EWP
- Working at heights
- Confined spaces
- Dogging
- Forklift

We have also formed strategic alliances with a number of specialists in a range of electrical and general business services, from directional boring to refrigeration services and electrical engineering.

Our company is committed to quality design, installation, and maintenance, and welcomes any contact with our previous clients in regard to performance.

SAFETY

ST8 Wide Electrical is Safety certified with ASSA- Online SWMS & risk assessments. Safety is our highest priority and we are committed to ensuring all our staff return home safely.



EQUIPMENT

At St8 Wide Electrical we have at our disposal a large fleet of machinery and complex tools and test equipment. Some of the items listed below

- 3-tonne excavator
- 5-tonne tipper truck
- EWP & Scissors
- 100kva 3phase generators
- Instrumentation meters & testers

RECENT WORKS



Vegetable Processing Facility

Location: Cambooya QLD

Value: \$923,565.

Client: Story Fresh Farms

Site Manager: Ben Charlesworth

Start Date: September 2019

End Date: March 2020

Client Referee: Nathan Story

Works Description:

Design, supply and installation of new site 2500amp main switchboard, 1500amp submains, and new MCC with over 100vsd's. Associated wiring and instrumentation for cutting, multi-spectrum sorting, washing, drying, and packing equipment.

20K head feedlot mill update

Location: Millmerran

Value: \$360,000

Client: Lemontree feedlot

Site Manager: Kane Adamson

Start Date: March 2017

End Date: June 2017

Client Referee: Ben McNamee

Works Description:

Complete re-do of the motor control center with new PLC and HMI's. Updated limits and safety to meet current standards. Work was completed while mill was still operational.

Feed Mill Upgrades and Maintenance Electricians

Location: Toowoomba & Clifton

Value: \$ on-going

Client: Ridley

Site Manager: Ben Charlesworth

Start Date: January 2021

End Date: on-going

Client Referee: Chris Adams

Works Description:

St8 Wide Electrical Provides a 24hr on-call service to both the Toowoomba plant & Clifton plant. As well as providing all system upgrade works including but not limited to MCC upgrades, automation and sensor upgrades, new machine installs. All work is provided with minimal downtime.



Solution Specialist

ADVANCED PROGRESSIVE EXPERIENCED

Address: 27 Boothby St Drayton Qld 4350

Email: admin@st8wideelectrical.com.au

Phone No: 0746 340 882

Website : <https://www.st8wideelectrical.com.au/>

